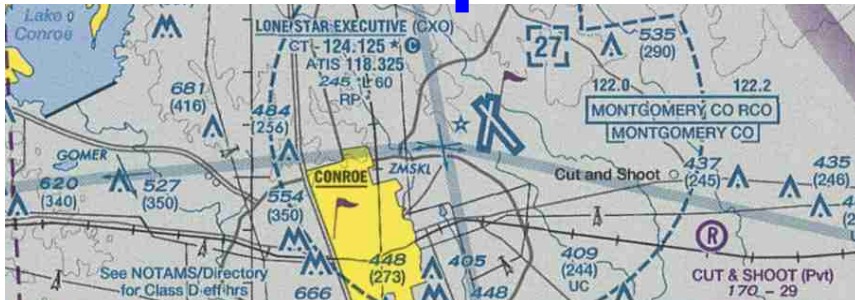


# EAA Chapter 302



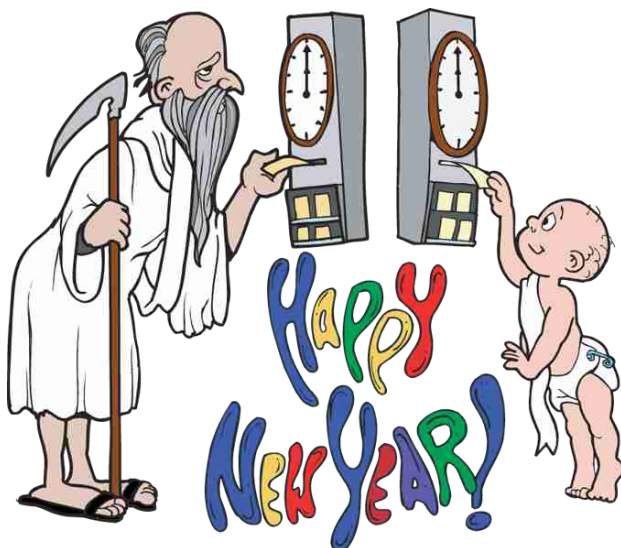
Volume 37-Issue 1  
January, 2015

## Newsletter

### MEETING NOTICE

**January 10, 2015 at 10:00 AM**

There was no regular meeting in December and the Christmas Party was the main event. As a result there will be no meeting minutes in this issue. Chapter 302 business will begin again in January under our new President Don Brewer.



#### This Month's Program

**Tour the Spruce Goose**

**Alaska on Floats and Skis**

**FAAST meeting on Weather  
immediately after  
adjourning**

#### In This Issue:

<b>2014 Christmas Party.....</b>	<b>2</b>
<b>Next Fly-Out.....</b>	<b>3</b>
<b>Conroe Airport Progress.....</b>	<b>4</b>
<b>Ads &amp; Classified.....</b>	<b>5</b>

# 2014 Christmas Party

EAA 302 members gathered on December 13 at the Black Walnut Restaurant from 6 to 9pm. 71 people attended. The menu was pot roast or lemon chicken and fixin's. The weather cooperated beautifully and everyone enjoyed a panoramic view of Lonestar Regional and the runway lights. The program was installation of our new President (complete with our new PA system), a White Elephant gift swap, and an optional Toys for Tots drive that reaped 3 large cartons of toys.



A cash bar operated through the night, resulting in no room charge by the BW



Outgoing President Colchin presents the Dodo Award to New President Brewer.



Chuck McCluggage checks out his new Santa outfit (which got stolen)



BW decorations put everybody in a festive Christmas mood.



Don swipes himself some hangar decor- A damaged "Low Flying Aircraft" sign





## The Next Fly-Out

January 13, 2015

Rain date, January 20

**Moody Gardens  
Lunch**

**Choice of Rainforest Pyramid,  
Aquarium, or 4D Movie-Plex**

These are Tuesday dates to take advantage of a great discount! 65+ gets in for 5 BUCKS.

## Schedule

For anyone uncomfortable about flying around a Class B airport, we will have a jam-session at Denny's hangar (Bldg 44-D-1) at 10:00AM. You will need to be tying down at KGLS by 11:30. Lunch will be at the Moody Garden Restaurant. If you don't want to do a pyramid, the shows start at 12:55 & later. Primary focus is one of the 2 pyramids where seniors get in for \$5. This is weather dependant. Send your questions to Denny at [dirvine@suddenlink.net](mailto:dirvine@suddenlink.net) or text 936-827-0091.

## Costs

### Rainforest or Aquarium

Adults.....\$21.95

Seniors/Kids.....17.95

Tuesday-Seniors 5.00

### 3D or 4D Movie

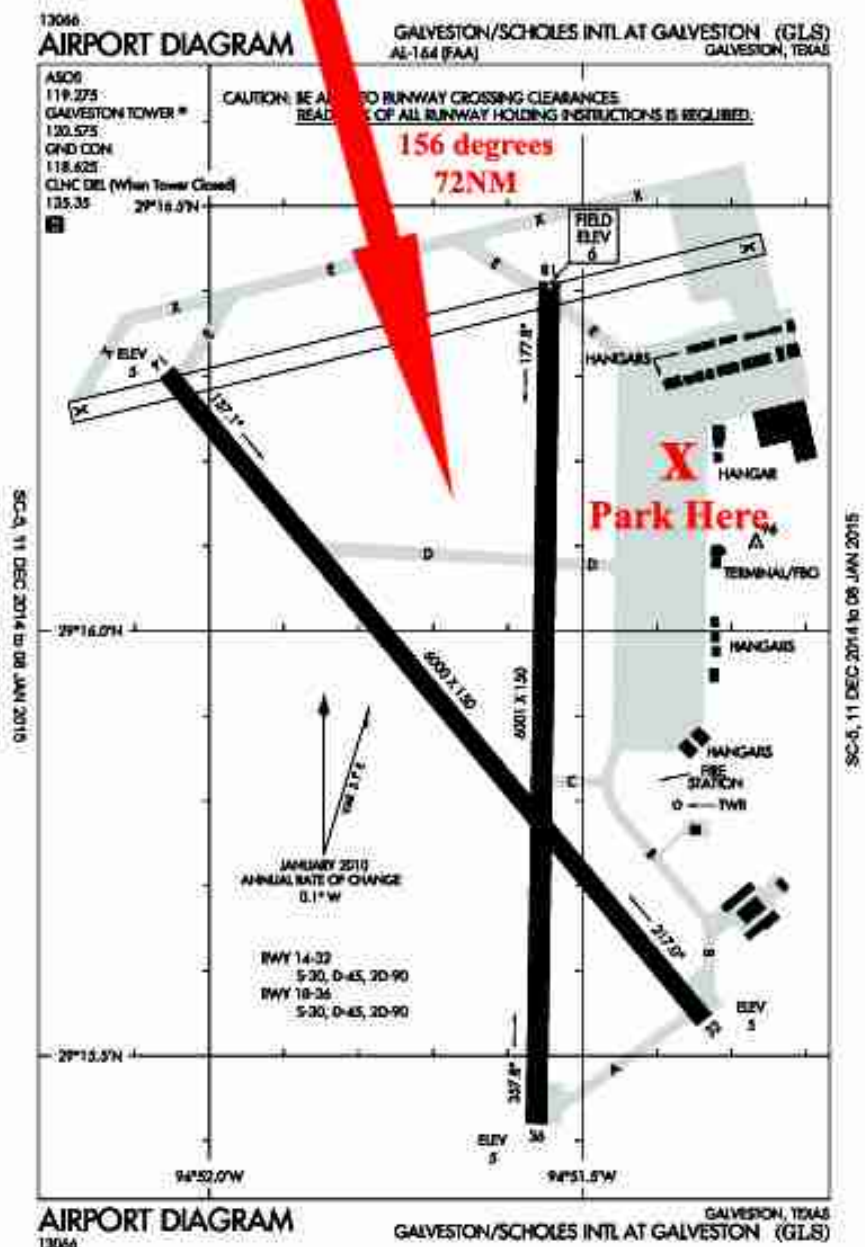
Adults.....\$10.95

Seniors/Kids.....8.95

"Wild Ocean".....12:55pm

"Great White Shark".....1:25

"Titans of the Ice Age"....1:55





## KCXO Airport Progress



Above, you can see a recent aerial picture of KCXO. There are several changes to the old airport diagram, and we could be using those in less than a month. Crews are finishing the extension of 14 at left, while work on the new ILS (below) will take a bit longer.



The runway/taxiway project is expected to be completed by the end of January. Paving is completed except for several taxiway intersections and the tie-in of the new taxiway alignment to Taxiway F. Once paving is completed, the electrical contractor will install the remaining taxiway edge lights and signs, and then sodding/seeding will be completed. The new instrument approaches to Runway 14 are scheduled for publication on March 5, 2015.



### **EAA302 Officers&Contact Info**

**President**  
Don Brewer 936-443-9163  
cardonb@consolidated.net

**Vice President & Newsletter**  
Denny Irvine 936-827-0091  
dirvine@suddenlink.net

**Secretary**  
Brent Crabe 936-494-9494  
brentcrabe@earthlink.net

**Treasurer**  
Don Guice 832-257-2717  
donguice@aol.com

**Young Eagles**  
Chuck LeKron 832-563-0135  
clekron@yahoo.com

**Website**  
Larry Perryman 281-222-6361  
n9159s@yahoo.com

**Membership**  
Bob Humes 832-423-8442  
bobhumes@rwhumes.com

## **Calendar of Events**

*Call before you go*

- 1st Saturday, Fly-in Lunch, Leesville, LA (**L39**)  
EAA Chapter 1356
- 1st Saturday EAA Chapter 614 Pancake  
Breakfast, 7:30-10:30am, Pineville, La, Pineville  
Municipal Airport (**2L0**)
- 3rd Saturday, Fish-fry Lunch, Discount Fuel,  
Jasper TX (**KJAS**)
- 3rd Saturday, Lufkin, TX, The Cook's Choice  
Fly-in, Angelina County, (**KLFK**) **April, June,**  
**August, October**
- 4th Saturday, Fly-in Breakfast, 8-11am., Tyler,  
TX, Pounds Field (**KTYR**)
- 4th Saturday Fly-in Lunch 11-2, DeRidder, La.  
Beauregard Regional Airport (**KDRI**)

Partnership available: 1977 Grumman Tiger, 2170TT, 170SMOH, new G430W, CI autopilot, 4 place intercom, aircraft in excellent condition, all logs, NDH. I currently own this aircraft, and seeking partners for up to 5 owners. 1/5 shares at \$15k. Aircraft is based at Lone Star, CXO. If interested, call Jeff at 219-608-1463 or email [jefflehner@hotmail.com](mailto:jefflehner@hotmail.com) 1/15

For Sale 2006 Zenith Zodiac CH601XL-B, always kept in hangar, currently at Hooks (KDWH) Equipped with: Jabiru 3300A Power Plant; PFS-Blue Mountain Lite; Audio Panel with Marker beacon; Bendix/King Xponder; #1 Comm Garmin SL-30; ELT-Ameri-King; #2 Comm IC-A200 ICOM; 4 12 gallon fuel tanks; dual sticks; night flight equipped; Grand Rapids EIS; 2 wing lockers. Less than 100 hours TT. \$30,000 Contact Bill at 210-865-4591 opr [bartlettSA@gmail.com](mailto:bartlettSA@gmail.com) 1/15

Honda EB 5000 generator with US Carburation Trifuel conversion (works on gasoline, natural gas or propane) Includes PROTRAN 31406 C transfer panel, gas hose, connectors, cord and socket. Less than 150 hours since new. Cost new for all above \$2722.00. Asking \$1200.00 Jim Pahoski 936-524-7872 [jimpoho@suddenlink.net](mailto:jimpoho@suddenlink.net) 1/15

AN hardware from an FBO for sale. Screws, bolts, washers, fasteners. Large Inventory. Buy all or part. Make offer. Located at CAVOK Airpark in Cleveland. Contact Larry Elliot 713-398-5899 12/14

Is it time to check your logbook for a "Flight Review"? If you are coming up on your two year anniversary date, give me a call and let's go have some fun. If you are not "Legal", it could invalidate your insurance should you have a claim. We will talk about aviation for an hour, fly for an hour, and lunch is on me. Dick Kardell—30,000+ hours, tailwheel and most anything that flies from J-3's up. 936-525-8884 or evenings 936-597-4340. 12/14

**Machine Shop Access: Tom Kreiner**, EAA 302 member, is offering access to his machine shop for discount rates and rebates to our section. Contact @ 832-326-2970 or [tkreiner@gmail.com](mailto:tkreiner@gmail.com) 12/14

Piper Super Colt PA22/160 1961 Logs since new TT2534 SMOH 831 4 new cylinders 56.0 Total restoration March 2014 King KY197A Com Garmin GNC250XL Nav/Com KT76C Xponder. JPI450 fuel scanner, intercom, 9 in&out Just reduced to \$35,000 Tom Davenport 713-504-5536 tomballoonatic@gmail.com 12/14

1957 Piper Tri-Pacer PA-22 1560 Total time, 150 SMOH. Asking \$20,500—flexible pricing for chapter members. Taught kids to fly and now looking for an RV-6. Contact Pat 832-579-7236. Listed in Trade-a-Plane for details. 11/14

RV-7 wings for sale. Finished quick build RV-7A wings in the Dallas area. Includes Capacitive fuel gauge and Aircraft Extra's low fuel warning system. For more info, Contact Eddie Eiland 713-202-1229 or eddie@eilands.net **Serious inquiries only, please.** 10/14

For Sale—Always hangared 6 seat Beechcraft Baron 95-55 TC 1598 200 knot cruise. IO-520E Colemill Conversion engines, both props zero time overhauled 2014. Magnetos overhauled 2014. 4 Place Garmin Intercom, Garmin 430 WASS feeds Garmin 630 and Aspen PFD. Vert Card Compass, TCAS, dual yokes, tinted windows, new batteries, annual 3/2014. Includes jack stands and specialty tools. \$195,000 Contact Mechanic Don Holly 936-203-2602 10/14

Did you notice something new about your classified ad page? As we grow, it keeps getting bigger and has exceeded one page. In an effort to keep it current, new stuff is at the top, ads have a date and year code, and they keep moving down. They will be removed when they get 6 months old. You can resubmit them and they will go to the top.

Regards! Your Editor

**Disclaimer:** Chapter 302 assumes no responsibility or risk for use of products occasionally listed for sale. This is a service to members and does not constitute an endorsement of such products by the Chapter, its members, or the EAA. All building tips and suggestions put forth in the newsletter or at chapter meetings are informational only. The Chapter assumes no liability or responsibility for the accuracy of such material. Anyone applying such information to their flying or project does so at their own volition and risk.