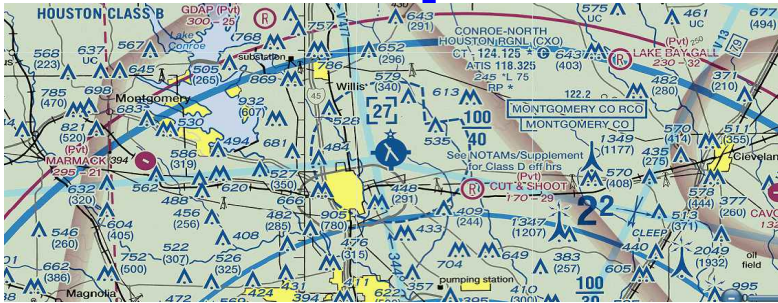


# EAA Chapter 302



# Newsletter



Volume 46-Issue9  
September, 2024

## MEETING NOTICE

**September 14TH, 2024, 10:00 AM**

See the last page for a map to the meeting

### IMC/VMC MEETING



Thursday.  
Sept 12th  
7-8:30  
Galaxy



### THIS MONTH'S PROGRAM

News from HQ

The "Jackaroo"

Removing Wire from  
Socket Connectors

### IN THIS ISSUE

Aug10th Meeting Minutes.....	2
Airport News.....	3-4
IMC/VMC.....	5
Events Update.....	6
Young Eagles.....	7-8
Flyout Posters.....	9-10
Tyler Flyout.....	11



# AUGUST 12TH MEETING MINUTES

**Call to Order:** President Joe Waltz welcomed approximately 72 members and visitors at 10 AM in the Galaxy FBO meeting room.

**Pledge of Allegiance:** President Joe Waltz led the chapter pledge.

**Welcome Visitor!** Ralph Noah is starting at the University of Florida to study biomedical science. Kayla Nel is working on her CFI at Chennault with a goal to return to her airline as a pilot. Jovian Dudley is flying at Coast Flight Training. **New Member!** Danial Bauleu is interested in kit building and is thinking about the Bearhawk.

**Treasurer's Report:** Beginning balance July 1, 2024: \$11,021.80 + \$200 cash on hand. Ending balance July 31, 2024: \$14,525.63 - \$200 cash on hand. Highlights include: Dues income \$150, Ray Scholarship Income \$6,600. Rent Expense \$200 and Ray Scholarship Expense \$3,000.

**Safety Minute:** Phil Dixon is the FAA Safety Team (FAASTeam) Program Manager. In this video he discussed looking for a bargain or speedy service when shopping around for your annual aircraft inspection. This may not be the safest decision. Annuals are supposed to dive deep into the airworthiness of your airplane. These inspections are for your safety. Search YouTube: *Beware the \$300 Annual in 57 Seconds*

**EAA Air Academy Camp & Ray Scholar Update:** You will remember at the March meeting Carter Gearn was awarded a scholarship to attend Air Academy Basic Camp 2024. We were fortunate to secured an additional slot for Air Academy Advanced Camp 2024 which 'Tank' Parish attended. Ray Scholar Jake Reynolds has completed his first X-Country. We'll hear an update from each of them very soon.

**Program:** William Presler talks about his 2/3-scale P-38 Lightning that was built by his late uncle Jim O'Hara. It is a testament to brilliant engineering and unwavering dedication. This airplane was shown at AirVenture 2024. Some of our membership saw it there. Search YouTube: *An Unbelievable Lifelong Project | Uncle Jim O'Hara's 2/3-scale P-38*

**Project Updates:** Tom Hammer / Highlander SuperSTOL = Two Garmin G3X panel, all avionics are remote mounted, working RS Flight Systems with governor interface for Rotax engine for a single lever variable pitch MT Propeller. Using Stewart Systems cover and paint system, built paint booth, covered / painted flight controls, wings will be covered next. Todd Johnson (Report by Rich Jankowski) / RV10 = SDS Fuel Injection and Electronic ignition, has oil quantity and temp sensor installed, engine run is scheduled soon. Rich says he is doing quality work on his project.

**First Flight:** First 25 minutes flown just this morning and before the oil had cooled Bob Fay was here to gave us an update on his RV14. He took transition training in a factory demonstrator near Philadelphia a month ago. The Airworthiness Certificate was issued just last week. Congratulation Bob!

**Hints for Homebuilders:** EAA Homebuilt Aircraft Council Member and RV-8 builder Mike Dooley demonstrated the Avery joggle tool. Search <http://EAA.org>

## News and Reports:

Next Young Eagle event Sept. 21. Volunteers, pilot and airplanes 9 AM at airport offices.

Chapter 302 has flown well over 1000 Young Eagles, so EAA has provided a new Young Eagle Event banner.

## Adjourn

-Fly out planned to Lufkin (KLFK) for lunch at the Angelina County Airport Cafe.

-Remember before each meeting some gather any time after 8 AM on the 3rd floor at Black Walnut Cafe for breakfast. Also, after the meeting consider lunch at McKenzie's BBQ at 1501 N. Frazier St, Conroe by noon.

# NEW PAINT AT CONROE



EAA member Alex Vastola recently got his airplane back from the paint shop. It was painted by MC Aircraft Refinishers of Devine, Texas.

Perhaps you remember this airplane? It was built by member Don Guice who moved to Mexico. Don flew it to and from Mexico for several years. It has a Lycoming O-360, fixed pitch prop, and Grand Rapids 10" & 8" glass cockpit. It used to be in just automotive white primer and was called the "Refrigerator". Stop by and see it now at Hangar 44B-10 on the "Hill".

# THE AUGUST LUFKIN FLYOUT



We hit the weather just right. There were 8 airplanes and twelve people from Conroe EAA who flew to Lufkin.



The bad part is we had four seats that went empty. Apparently several didn't get the word.

Check for a signup sheet at the entrance to the meeting and coordinate a ride.



# TOOL SALE



Too much to list

**Entry Table  
at the Regular  
Meeting**



**Everything 66%  
Off New**

A generous donation  
from Kathy Bryan



# IMC/VMC Club

## (2nd Thursday each month)

Please join us 7:00pm Thursday, September 12th (Galaxy FBO Conference Room) to discuss the answers to these questions and video scenarios. Bring questions of your own, because we always save time for a little organized hangar flying!!

**VMC Question of the Month: What expenses can be legally shared by private pilots and their passengers while operating under Part 91?**

**Video Scenario: Flap or No Flaps**

The preflight reveals no problems with the airplane. Fuel was topped off at a nearby airport, and then flown back to Montauk, leaving you with 50 gallons available. Oil is full, and all flight controls and systems seem to be operating normally.



Flight

3:52

**IMC Question of the Month: Many pilots are accustomed to temperatures in degrees F, but have difficulty converting degrees C to degrees F. What is a simple conversion from degrees C to degrees F that you can make in your head?**

**Video Scenario: Pop-Up Problems**

The local weather is VFR with scattered layers up to 8,000 feet, but to the east, conditions are IFR.

Winds aloft at cruise altitude are expected to provide a 15-knot tailwind. Conditions at ELM are forecast to include ceilings of 600 to 800 feet with 6 miles visibility.



Weather

3:24



# EVENTS COMMITTEE UPDATE

**Keith Pache**

- 1) 10:00am-?? Monday Donuts & Coffee (Hangar 17E - Taxiway D).
- 2) 7:00-8:45pm Thu. September 12<sup>th</sup> IMC/VMC Club Meeting at Galaxy FBO (see Newsletter for details).
- 3) 10:00-11:30am Sat. September 14<sup>th</sup> Chapter Meeting (Galaxy FBO).
- 4) 11:30am-?? Sat. September 14<sup>th</sup> Fly-Out to Sky's The Limit Diner at the base of the tower. Can also tour the Historical Aviation Memorial Museum while you're there (KTYR – see Newsletter for details).
- 5) 9:00am Sat. September 21<sup>st</sup> Young Eagle Rally (Airport Office building, 8:00am volunteer arrival).
- 6) Flying Event Links:
  - a) Fun Places to Fly = <https://www.funplacestofly.com/funflyeventbyzip.asp>
  - b) Social Flight = <http://www.socialflight.com/search.php>
  - c) EAA Webinars = <https://www.eaa.org/ea/news-and-publications/ea-webinars>
  - d) FAA Safety Webinars = <https://www.faasafety.gov/SPANS/events/EventList.aspx>
- 7) Events Calendar: Here's a partial list of upcoming events. You'll find many more (with working hyperlinks) by going to our website and clicking on Flying Events under Our Chapter:

<https://eaa302.org/flvinq-events/>

Date	Description	Location	CXO Dist.	Website	Contact
9/14/24	8:30am-12:30pm Airplanes and Coffee	KTRL Terrell Municipal Airport Terrell, Texas, USA	148 nm	<a href="https://airplanesandcoffee.com/events/">https://airplanesandcoffee.com/events/</a>	214-817-4367 info@airplanesandcoffee.com
9/14/24	10:00am-2:00pm HRO Fly-In	KHRO Boone County Airport Harrison, Arkansas, USA	372 nm	Facebook - Airport Fly-Ins	None
9/19-21/24	36th Annual B-17 Gathering and Big Bird Fly-In (RC)	Bomber Field - Monaville, TX	75 mi.	<a href="https://www.bomberfieldusa.com/events">https://www.bomberfieldusa.com/events</a>	Constantin De Bock 281-601-7805 constantin_debock@hotmail.com
9/20-21/24	1:00pm-11:00am 35th Annual "Under the Wire" Fly In	T26 Flying V Ranch Airport Louise, Texas, USA	91 nm	Facebook	None
9/21/24	9:30am Coffee & Donuts Fly-In (3rd Saturday each month)	KTKI McKinney National Airport Dallas, Texas, USA	179 nm	<a href="https://www.funplacestofly.com/aviation-event-details.asp?EventID=26166">https://www.funplacestofly.com/aviation-event-details.asp?EventID=26166</a>	Smitty president@eaa1246.org
9/28/24	9:00-11:00am EAA 1607 Pancake Breakfast (4th Saturday each month)	KRYW Lago Vista TX/Rusty Allen Airport Lago Vista, Texas, USA	133 nm	<a href="http://www.eaa1607.org/">http://www.eaa1607.org/</a>	Lance Clinton 512-897-7815 president@eaa1607.org
9/28/24	8:30am-12:30pm Airplanes and Coffee MASSIVE FLY-IN	KTRL Terrell Municipal Airport Terrell, Texas, USA	148 nm	<a href="https://airplanesandcoffee.com/events/">https://airplanesandcoffee.com/events/</a>	214-817-4367 info@airplanesandcoffee.com
9/28/24	9:00am-3:00pm EAA 983 Fall Fly-In and Classic Car Show	OTX1 Pecan Plantation Airport Granbury, Texas, USA	167 nm	<a href="https://www.funplacestofly.com/aviation-event-details.asp?EventID=26426">https://www.funplacestofly.com/aviation-event-details.asp?EventID=26426</a>	Bob Pastusek 757-286-4802 rpastusek@gmail.com
10/4-6/24	Old School Fly-In & Airshow No.17	F23 Ranger Municipal Airport Ranger, Texas, USA	210 nm	<a href="https://www.rangerairfield.org/airshow">https://www.rangerairfield.org/airshow</a>	254-433-1207 info@rangerairfield.org
10/5/24	9:00-11:00am Aviators Breakfast (1st Saturday each month)	KGTU Georgetown Executive Airport Georgetown, Texas, USA	119 nm	None	Cutter Aviation 512-869-0900
10/5/24	9:00-Noon Breakfast Taco & Pancake Shindig (1st Saturday each month)	50R Lockhart Municipal Airport Lockhart, Texas, USA	121 nm	None	None
10/5/24	EAA 614 Fly-in Pancake Breakfast (1st Saturday each month)	2L0 Pineville Municipal Airport Pineville, Louisiana, USA	165 nm	Facebook - SE Texas Aviators	None
10/5/24	9:00am EAA 1246 - Coffee & Donuts (1st Saturday each month)	KTKI McKinney National Airport Dallas, Texas, USA	179 nm	None	1246memberservices@gmail.com
10/11-12/24	North Little Rock Airshow	KOKK North Little Rock Municipal Airport North Little Rock, Arkansas, USA	312 nm	<a href="https://www.funplacestofly.com/aviation-event-details.asp?EventID=26457">https://www.funplacestofly.com/aviation-event-details.asp?EventID=26457</a>	Jerry Homsley 501-517-6210
10/12/24	6:30pm-Midnight 32nd Annual Big Band Hangar Dance	KFTW Fort Worth Meacham International Airport Fort Worth, Texas, USA	178 nm	<a href="https://vintageflyingmuseum.org/32nd-annual-big-band-hangar-dance/">https://vintageflyingmuseum.org/32nd-annual-big-band-hangar-dance/</a>	817-624-1935 info@vintageflyingmuseum.org



# YOUNG EAGLE RALLY

## Saturday September 21

### Please consider volunteering For a Young Eagle Event



## FALL IS COMING!

### Should be Cool Flying Weather

## It's time for another Young Eagle Rally

We have picked Saturday, September 21<sup>st</sup> to hold another rally. Location will be at the Airport Office Building. Members can volunteer for ground or flight positions. **We especially need pilots/airplanes.** Please use the checklist on the following page. (Reference only, you don't need to turn in) If you need to be qualified for the Youth Protection Program, (YPP) please go to:

<https://www.eaa.org/eaayouth/youth-protection-policy-and-program>.

We will be using the new on-line program from National to sign up. Volunteers need to show up at 8:00 for setup with plans to start flying at 9:00. Please contact Dean Marcott, text or email at 815-382-2220 or [deanmarcott@yahoo.com](mailto:deanmarcott@yahoo.com).



## EAA 302 Young Eagles Pilot/Aircraft Qualifications - Self Verification

rev 8

Pilot Name: \_\_\_\_\_  
 Aircraft Type: \_\_\_\_\_ Tail Number: \_\_\_\_\_  
 EAA Membership Number: \_\_\_\_\_  
 Pilot Phone Number: \_\_\_\_\_  
 Email: \_\_\_\_\_

Item	Requirement	Expiration / Next Due Date	Self Verification Initials
Current EAA National Member	Member of EAA (Chapter membership not req.)		
Aircraft Passenger Liability Insurance	\$100,000 per seat - minimum		
Pilot License	Sport Pilot or Better	N/A	
Medical or D.L. (Sport )	Current		
Currency	3 Take Off and Landings in 90 days (add 90 days to last 3)		
Flight Review	Within 24 months (add 24 months to last)		
Aircraft Airworthiness Cert	On Board	N/A	
Pitot Static / Transponder Check	Current – every 2 years		
Aircraft Registration	Current and On Board (expires every 3 years)		
POH / Operating Limitations	On Board	N/A	
Annual or Condition Inspection	Within 12 Months (add 12 months to last)		
EAA Youth Protection Certification (video training)	Required every 3 Years <a href="https://www.eaa.org/en/aaa/account/account_login#/login">https://www.eaa.org/en/aaa/account/account_login#/login</a> / My Account / scroll down to Go to Training		

Pilot Signature: \_\_\_\_\_

Date: \_\_\_\_\_





Free lunch for pilots  
flying in

## FLY-IN & CARSHOW

Aircraft Parking limited please RSVP

September 28th



MADISONVILLE MUNICIPAL



Music

AIRPORT

Food

2207 Airport Ln.

for more information call (931)348-9222

10am-2pm



# 23rd Annual Cedar Mills South Central Safety Seminar & Fly/Splash In Oct. 18, 19, 20, 2024



Something for everyone ... both land and sea!

Join us at Cedar Mills (3TØ) on beautiful Lake Texoma for North Texas' most informative and fun safety seminar and fly-in.

## Forum

presented by the FAA, aviation instructors & representatives of aviation equipment, manufacturers, avionics & aviation industry, along with fun education programs.



Join in the fun...

camp under your wing or enjoy a cottage!

## Seminars

Every seminar qualifies for **WING** credit & **DOOR PRIZES!**

Each seminar attended gives the pilot additional chances to win the **Grand Prize!**

**Octoberfest Dinner** featuring **Aviation Guest Speaker**

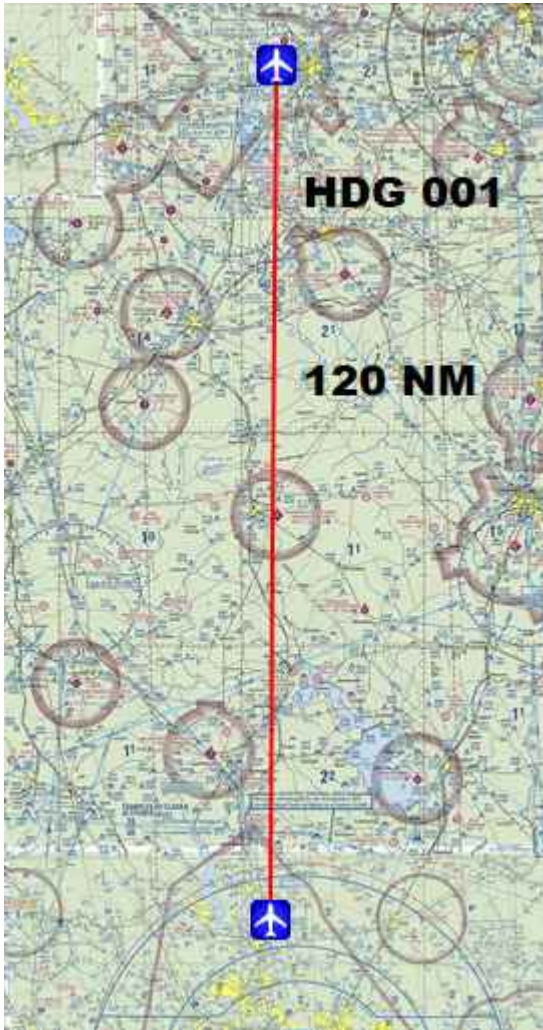
**Brian Schiff**

Commercial Airline Captain

**There I Was Smoke And Fire; Lesson Learned!**



# SATURDAY FLYOUT KTYR TYLER POUNDS REGIONAL



**TYLER POUNDS RGNL (TYR/KTYR)** 3 W UTC-6(-5DT) N32°21.21' W95°24.18' DALLAS-FORT WORTH  
H-GI, L-17D  
IAP, AD

544 6 Class I, ARFF Index B NOTAM FILE TYR

**RWY 04-22:** H8334X150 (CONC-GRVD) 5-120, D-222, 2S-84, 2T-223, 2D-357, 2D/D1-212, C5-342 PCN 6S R/CW/T HIRL

**RWY 04:** MALS, PAPI(P4L)—GA 3.0' TCH 55'

**RWY 22:** REIL, PAPI(P4L)—GA 3.0' TCH 54'. Thld dptd 600'. Tree.

**RWY 13-31:** H5198X150 (ASPH-GRVD) S-25, D-40 PCN 9 F/CW/T HIRL 0.5% up SE

**RWY 13:** Pole.

**RWY 31:** VASI(V4L)—GA 3.0' TCH 54'. Road.

**RWY 18-36:** H4832X150 (ASPH-GRVD) 5-109, D-172, 2D-289 PCN 43 F/B/W/T MIRL 0.6% up S

**RWY 18:** Tree.

**RWY 36:** Tree.

**RUNWAY DECLARED DISTANCE INFORMATION**

<b>RWY 04:</b> TORA-8334 TODA-8334 ASDA-7734 LDA-7734
<b>RWY 13:</b> TORA-5198 TODA-5198 ASDA-5198 LDA-5198
<b>RWY 18:</b> TORA-4832 TODA-4832 ASDA-4832 LDA-4832
<b>RWY 22:</b> TORA-8334 TODA-8334 ASDA-8334 LDA-7734
<b>RWY 31:</b> TORA-5198 TODA-5198 ASDA-5198 LDA-5198
<b>RWY 36:</b> TORA-4832 TODA-4832 ASDA-4832 LDA-4832

**SERVICE:** 54 FUEL 100LL, JET A QX 1, 3 LGT When ATCT clsd actvl

**MALS:** Rwy 04; REIL Rwy 22; HIRL Rwy 04-22; MIRL Rwy 18-36; twy lghts—CTAF. HIRL Rwy 13-31 preset med intst, to incr intst actvl—CTAF. PAPI Rwy 04 and 22, VASI Rwy 31 opr consly. Rwy 22 VGSi unusabl by 9 deg left and right of centrn.

**NOISE:** Noise statement procedures in effect Call 903-590-3048.

**AIRPORT REMARKS:** Attended 1100-0400ZL. West side passenger terminal ramp access rstd to air carrier. Conditions not monitored btn hrs of 9:30 PM and 6:30 AM local.



We did Tyler Pounds exactly 10 years ago and it was a big success. Let's do it again.





## CLASSIFIED ADS

Ads are free to any EAA member. They will run for 6 months, or until you pull them out of classified. Text or Email to [dirvine1945@gmail.com](mailto:dirvine1945@gmail.com)



### L-235/O-320 Project FOR SALE

This is a project I've been working on for 5 years, but I will be too old to fly it if I'm actually able to complete it. I'm hoping to find a buyer within the greater Houston Metro area first, so that I might be able to help that person finish it, if desired. This is a potential 200 mph aircraft, but it does have the original "small" tail. Fuselage and cowl are at my home in Richmond, and the wings, flaps and canopy are at my hangar at Sugar Land. If you are interested, please call or email me, and I will provide you a link to all my on-line documentation and photos. Currently asking \$46,778.53 or less, depending on tools included. Price will go up, as I'm still working on it.

**JEFF FOLTZ 713-725-7889**  
[jeffrey.w.foltz@gmail.com](mailto:jeffrey.w.foltz@gmail.com)



Selling a 50% partnership with hangar in Conroe, TX (KCXO). Updated interior and avionics recently. VFR certified and IFR ready (Just needs certification). Low engine hours and plenty of time remaining SMOH. Fresh annual will be done at the beginning of August. Plane will be ready for final sale August 15.

Garmin GNX 375 (ADSB IN - OUT), G1106A, and GA 35. (Installed 2021) King KN75, KI209, and C1122. (Installed 2021) TKM MX11 COMM Total Time – 4883.33 SMOH-750. Lycoming 0-320-E3D 150 HP Prop type - Cruising prop - Sensenich model 74DM6-0-58 (SN k33312)

Go to [www.trade-a-plane.com/search?](http://www.trade-a-plane.com/search?category_level1=Single+Engine+Piston&make=PIPER&model=CHEROKEE+140&listing_id=2433109&s-type=aircraft)

[category\\_level1=Single+Engine+Piston&make=PIPER&model=CHEROKEE+140&listing\\_id=2433109&s-type=aircraft](http://www.trade-a-plane.com/search?category_level1=Single+Engine+Piston&make=PIPER&model=CHEROKEE+140&listing_id=2433109&s-type=aircraft)

**FREE--** RV-7 wing stand, and a disassembled paint booth that I will give to anyone interested. The wing stand is 8 feet long and will fit in the back of a pickup with an overlap of the extended tailgate. The paint booth is now in 8+ sections (8'x 8') that will require a large trailer or panel truck to move. The assembled booth is 24' x 12', but could be re-assembled as a 16' x 12', or 8' by 12' booth, if space is a problem. The items are at my hangar in Shepherd, TX. Call me at 713-398-5899 if interested. Pictures available.

Larry Elliott

Email: [swacpt@hotmail.com](mailto:swacpt@hotmail.com)

Phone: (713)-398-5899

# Classified (continued)



**FOR SALE--LED Wig-Wag flasher.** Two circuit, optically isolated with selectable flash rate and pattern. Will accept LED and/or standard lights up to 15 amps. Flexible installation. \$45.00

Signs:



Typical sign - \$10.00 each  
Tow bar mount - \$15.00 per set  
Rudder pedal extensions RV9/RV12 - 2 inch \$50.00 / 3 inch \$60.00 per pair  
RV14 Oxi bottle mount - \$60.00  
Custom applications available  
Custom panel bezels, headset hooks and many more  
Dean Marcott Phone/text: 815-382-2220  
email: deanmarcott@gmail.com

Accessories:



I'm David Pineda, currently a Private Pilot Student at LoneStar in Conroe. I started my PPL last fall. I am in the process of finishing the honey harvest for this year, funds from honey sales will go towards my flight fees. Also, I am offering hive sponsorship, includes naming a hive, 3-4 gallons of honey at next harvest time (June 2025) for \$200. I also do live Honey Bee removals from homes and structures. Honey Bee leasing for agricultural exemptions, Personalized bee management and maintenance.

My eventual goal is to fly for a living. I'm looking forward to trading in my bee suit for a pilot's uniform.

Thanks, David Pineda 281-745-0397

**Contact Info—go to Home/contact us**

**EAA 302 Officers**

**President**

Joe Waltz

**VicePresident**

Miles Demster

**Secretary**

Jim Morrical

**Treasurer**

Bill Donahoe

**IMC/VMC Club**

Keith Pache

**Young Eagles/Eagles**

Dean Marcott

**Property**

Denny Irvine

**Website**

Darryl Foster

**Membership & Communications**

Rick Oliver

**Newsletter**

Denny Irvine

**Events**

Keith Pache

We now meet in Galaxy FBO's building on the South Side of the Conroe-North Houston Airport. Use the South Entrance, 1<sup>st</sup> floor. Meetings start at 10:00 AM.

You cannot access the FBO by the old Airport Parkway. You need to use Loop 336 and turn at Hawthorne Drive. This road has an Airport Entrance sign which mentions Galaxy FBO and the Black Walnut Restaurant. This is just southeast of the Roller Skating Rink.

See you there.

