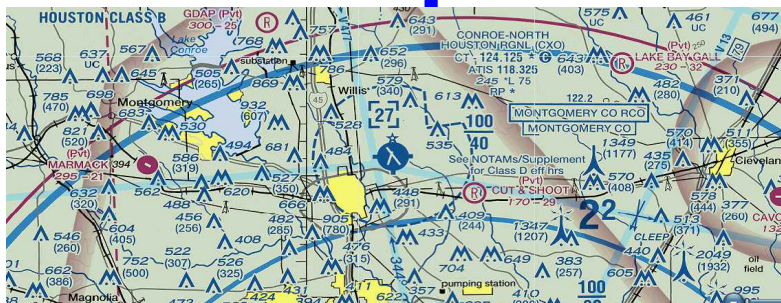


# EAA Chapter 302



## Newsletter



Volume 46-Issue6  
June, 2024

## MEETING NOTICE JUNE 8TH, 2024, 10:00 AM

See the last page for a map to the meeting

### IMC/VMC MEETING



Thursday.  
June 13th  
7-8:30  
Galaxy



### THIS MONTH'S PROGRAM

News from HQ

Lifelong Amphibian

Hints: Gyro Driver



### IN THIS ISSUE

Mar 11 Meeting Minutes.....	2
Airport News.....	3
Website Changes.....	4
IMC/VMC.....	5
Events Update.....	6
Flyout.....KLBX.....	7
Classified.....	8

# MAY 11TH MEETING MINUTES

**Call to Order:** President Joe Waltz welcomed approximately 62 members and visitors at 10 AM in the Galaxy FBO meeting room.

**Pledge of Allegiance:** Liam Masterson led the chapter pledge.

**Welcome Visitor!** Ralph Wainwright is known by some members and has extensive aviation & airline experience from Conroe. Ted & Jennifer Wilson - moving from Baha Mexico. Both enjoy sport flying. Ted is Sport Pilot CFI. Welcome Lee Arthur who is building a Velocity V-Twin. Chris Norman is an EAA member building a Lancair 360 from Richmond, TX. Michael Delpier owns an RV6 and is a CFI with Texas Flight. He will be Jake Reynolds CFI. Alex Kimber is a USAF pilot from Shaw AFB, SC visiting family on leave in the area.

**Treasurer's Report:** Beginning balance April 1, 2024: \$10,892.64 + \$200 cash on hand. Ending balance April 30, 2024: \$10,883.19 - \$200 cash on hand. Highlights include: Dues income \$150, Swindle income \$130. Rent Expense \$200. Burger Burn \$280

**Safety:** We watched a video from KITPLANES Metal Magic series where Paul Dye talked about shop safety. He is a multi-time builder and former NASA Flight Director. Think about what you wear in the shop. Sometimes it's safer to be without gloves or a long sleeve shirt. Pay attention to the task and wear safety gear that is appropriate. Search YouTube: *Metal Magic: Shop Safety*

**Ray Scholarship News:** Chapter President Joe Waltz read parts of an Email just received from EAA Oshkosh approving our Ray Scholarship recipient. Time line: Start training on May 31, first solo by August 31, 2024 and a PPL check ride NLT May 31, 2025. Congratulations Jake Reynolds! Michael Delpier, one of our visitors, will be Jake's CFI at Texas Flight at Hooks as he begins his training in the PA28.

**EAA Air Academy Camp News:** You will remember at the March meeting Carter Gearn was awarded a scholarship to attend Air Academy Basic Camp 2024. Chapter 302 was very fortunate to secure an additional slot for Air Academy Advanced Camp 2024. The Board of Directors has awarded that camp scholarship to 'Tank' Parish. Enjoy AirVenture and Camp. Congratulations Tank!

**Program:** This Midget Mustang MM1 is a plans-built experimental plane. It was designed in 1948 by Dave Long an engineer for Piper Aircraft. It was originally called the 'Pea Shooter'. This aircraft was built by Kit Sodergren. It's beautifully built and has some custom construction to make it really stand out in both the looks and performance. YouTube: *Gorgeous Midget Mustang Experimental Plane*

**Project Updates:** Alan Arrow / 1948 Piper PA-15 'Vagabond' restoration = Fabric complete and painted, installed fuel tank, flight controls and cockpit built out. Firewall installed and engine is mounted. Rick Oliver / Zenith CH750 STOL = Working on wing tip, flaperon and flap tips.

**Young Eagles Rally:** Our event canceled in April and its weather day in May also. Expect next event scheduled in October with cooler weather.

## News and Reports:

--Fly outs planned to Smithville and Cleveland.

--Check Newsletter for Keith Pache's Events offering. Lots of aviation things to do in our area.

## Adjourn

--Remember after the meeting consider lunch at McKenzie's BBQ at 1501 N. Frazier St, Conroe by noon.

--Before each meeting some gather any time after 8 AM on the 3rd floor at Black Walnut Cafe for breakfast.

# JAKE REYNOLDS—RAY SCHOLAR



Joe, Jake and Michael Delpier

At the Regular May Meeting, President Joe Waltz had just received and read the confirmation from EAA National that our Ray Aviation Scholar submission had been approved. Jake and Joe were joined by Jake's instructor from Texas Flight at KDWH. By the time you read this, Jake will have finished the school year and begun training. Watch for updates in future issues.



## FIRST FLIGHT

EAA 302 Member Daryl Rosinbaum has made his first flight of the Swearingen SX300 at Brenham. Daryl used to work for Swearingen as a test pilot and was attracted to this kit.

There aren't very many of these planes, as they are hard to build. It features retractable gear and a whopping 300 horsepower 6 cylinder engine behind a three-bladed prop.

The aircraft has a 2200 pound gross weight, does 230-245 knots and carries a 66 gallon fuel capacity. If you want to see a "speedy steed", you will have to make the trip to 11R where it is based.



# ARE YOU GOING TO AIRVENTURE?

Do you want to see who else is going, or want to keep in touch with who is there. Don't forget the EAA 302 Website (EAA302.ORG). Click on the "Airventure" heading which will take you to the "Sign Up Form". Fill it out and you'll have a complete directory.



Home Our Chapter Ray Scholarship Young Eagles AirVenture Store

## AirVenture

Going to AirVenture this year? Want to stay in contact with other EAA 302 members? Fill out the form below and let us know you're going.

[EAA 302 Sign-Up Form](#)

EAA AirVenture is a yearly air show held at Wittman Regional Airport in Oshkosh WI. It's a gathering of aviation enthusiasts, arranged by the the Experimental Aircraft Association (EAA). The show last a week, usually beginning on Monday of the last full week in July. During the gathering, the airport's control tower is the busiest in the world.

Please visit EAA's Main website for more information about AirVenture. <https://www.eaa.org/airventure>

## NEW--"PAY IN PERSON"

Don't want to login to our website to pay your dues? No worries, we're taking credit card payments at the meetings now. You'll notice a new selection on the check-out page of the webstore. The Treasurer has a new device to use for in-person charges. You can pay dues, buy tickets or merchandise.

Your order

Product	Subtotal
AeroShell Flight Jacket Cleaners and Polish × 1	\$5.00
<b>Subtotal</b>	<b>\$5.00</b>
<b>Total</b>	<b>\$5.00</b>

☒ Credit card / debit card

Card number  
1234 1234 1234 1234

Expiration  
MM / YY

Security code  
CVC

☐ Pay in Person

☐ I would like to receive exclusive emails with discounts and product information

PLACE ORDER

# IMC/VMC Club

## (2nd Thursday each month)

Please join us 7:00pm Thursday, June 13th (Galaxy FBO Conference Room) to discuss the answers to these questions and video scenarios. Bring questions of your own, because we always save time for a little organized hangar flying!!

**VMC Question of the Month:** Is it illegal to make a midfield crosswind pattern entry at an uncontrolled airport?

**Video Scenario:** Collision Course

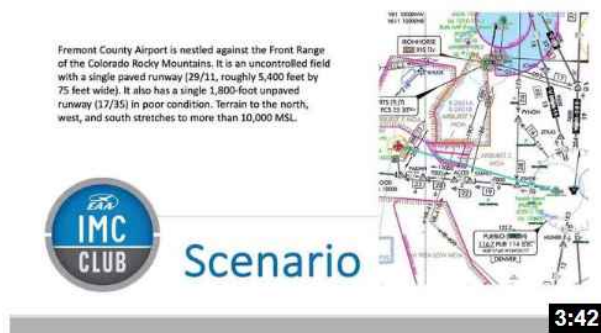


**IMC Question of the Month:** What causes the somatogravic illusion, and under what conditions is it more likely to occur?

**Video Scenario:** Speed Unknown



**Video Scenario:** Unstable RPM





# EVENTS COMMITTEE UPDATE

**Keith Pache**

- 1) 10:00am-?? Monday Donuts & Coffee (Hangar 17E - Taxiway D).
- 2) 10:00-11:30am Sat. June 8<sup>th</sup> Chapter Meeting (Galaxy FBO).
- 3) 11:30am-?? Sat. June 8<sup>th</sup> After Meeting Fly-Out to the Runway Café in Lake Jackson (KLBX).
- 4) 7:00-8:45pm Thu. June 13th IMC/VMC Club Meeting at Galaxy FBO (see Newsletter for details).
- 5) Flying Event Links:
  - a) Fun Places to Fly = <https://www.funplacetoofly.com/funflyeventbyzip.asp>
  - b) Social Flight = <http://www.socialflight.com/search.php>
  - c) EAA Webinars = <https://www.eaa.org/ea/news-and-publications/ea-webinars>
  - d) FAA Safety Webinars = <https://www.faa.gov/SPANS/events/EventList.aspx>
- 6) Events Calendar: Here's a partial list of upcoming events. You'll find many more (with working hyperlinks) by going to our website and clicking on Flying Events under Our Chapter: <https://eaa302.org/flying-events/>

Date	Description	Location	CXO Dist.	Website	Contact
6/8/24	8:30am-12:30pm Airplanes and Coffee	KSLR Sulphur Springs Municipal Airport Sulphur Springs, Texas, USA	168 nm	<a href="https://www.funplacetoofly.com/aviation-event-details.asp?EventID=262">https://www.funplacetoofly.com/aviation-event-details.asp?EventID=262</a>	214-817-4367 info@airplanesandcoffee.com
6/8-9/24	Warbirds Over South Texas	KRKP Aransas County Airport Rockport, Texas, USA	160 nm	Socialflight	None
6/8/24	Rockin' on the Runway	7LA0 Valverda Strip Airport Maringouin, Louisiana, USA	202 nm	Socialflight	None
6/15/24	9:30am Coffee & Donuts Fly-In (3rd Saturday each month)	KTKI McKinney National Airport Dallas, Texas, USA	179 nm	<a href="https://www.funplacetoofly.com/aviation-event-details.asp?EventID=261">https://www.funplacetoofly.com/aviation-event-details.asp?EventID=261</a>	Smitty webmaster@eaa1246.org
6/19/24	7:00-8:30pm EAA Webinar: Tips for Flying Into EAA AirVenture 2024	The comfort of your own home	0 nm	<a href="https://pages.eaa.org/2024-06-19WBN_FlyingIntoAV_LP-Registration.html">https://pages.eaa.org/2024-06-19WBN_FlyingIntoAV_LP-Registration.html</a>	None
6/22/24	9:00-11:00am EAA 1607 Pancake Breakfast (4th Saturday each month)	KRYW Lago Vista TX/Rusty Allen Airport Lago Vista, Texas, USA	133 nm	<a href="http://www.eaa1607.org/">http://www.eaa1607.org/</a>	Lance Clinton 512-897-7815 president@eaa1607.org
6/22/24	FAA Safety Seminar (Owner Pilot Maintenance) & Pancake Breakfast	KGDJ Granbury Regional Airport Granbury, Texas, USA	176 nm	<a href="https://www.faa.gov/SPANS/event_details.aspx?eid=130252&amp;caller=/SPANS/events/EventList.aspx">https://www.faa.gov/SPANS/event_details.aspx?eid=130252&amp;caller=/SPANS/events/EventList.aspx</a>	Robert Douglas Moreau 972-835-5035 rdfs_doug@gmail.com
6/29/24	8:00am Fly-In Breakfast (5th Saturday each month)	KCPT Cleburne Regional Airport Cleburne, Texas, USA	158 nm	None	None
7/3/24	Kaboom Town : Addison Airport Air Show	KADS Addison Airport Dallas, Texas, USA	173 nm	Socialflight	None
7/5/24	3:00pm Thunder Over East Texas	F44 Athens Municipal Airport Athens, Texas, USA	111 nm	<a href="https://ccveteransfoundation.org/thunder-over-east-texas-airshow/">https://ccveteransfoundation.org/thunder-over-east-texas-airshow/</a>	(505) 347-8420 info@ccveteransfoundation.org
7/6/24	9:00-11:00am Aviators Breakfast (1st Saturday each month)	KGTU Georgetown Executive Airport Georgetown, Texas, USA	119 nm	None	Cutter Aviation 512-869-0900
7/6/24	9:00-Noon Breakfast Taco & Pancake Shindig (1st Saturday each month)	50R Lockhart Municipal Airport Lockhart, Texas, USA	121 nm	None	None
7/6/24	EAA 614 Fly-in Pancake Breakfast (1st Saturday each month)	2L0 Pineville Municipal Airport Pineville, Louisiana, USA	165 nm	Facebook - SE Texas Aviators	None
7/6/24	8:00-10:00am CAF Pancake Breakfast Fly-in	KTFP McCampbell-Porter Airport Ingleside, Texas, USA	174 nm	Socialflight	3rd Coast Staff Member 361-356-4918
7/6/24	9:30am EAA 1246 - Coffee & Donuts (1st Saturday each month)	KTKI McKinney National Airport Dallas, Texas, USA	179 nm	<a href="https://www.funplacetoofly.com/aviation-event-details.asp?EventID=264">https://www.funplacetoofly.com/aviation-event-details.asp?EventID=264</a>	Smitty president@eaa1246.org
7/6/24	8:00am-Noon Turkey Mountain Airport Fly-In	MO00 Turkey Mountain Airport Shell Knob, Missouri, USA	384 nm	<a href="https://www.funplacetoofly.com/aviation-event-details.asp?EventID=264">https://www.funplacetoofly.com/aviation-event-details.asp?EventID=264</a>	Judy 417-858-6345 donna booth75@yahoo.com



# SATURDAY'S FLY OUT

## Texas Gulf Coast Regional Airport

If you want to get an early start, bring your aircraft to the meeting. We're heading for the Runway Cafe near Angleton and Brazoria.

Fuel is available—self serve--\$4.70 per gallon. Its a 75-ish nautical mile trip, but the reward is the freshest seafood in the Houston region. You don't even have to walk far to eat. The Cafe is right on the taxiway.

Its a 7000' runway-17/35, 17 is right traffic. CTAF is 123.0, AWOS 119.92. Just "skirt" around the Class B, and we'll see you there.



### ANGLETON/LAKE JACKSON

TEXAS GULF COAST RGNL (LBX)(KLBX) 4 SW UTC-6(-5DT) N29°06.52' W95°27.73'

25 B Class IV, ARFF Index A NOTAM FILE LBX

RWY 17-35: H7000X100 (CONC-GRVD) S-60, D-95, 2S-120,

2D-120 MRL

RWY 17: MALSR, PAPI(P4L)—GA 3.0° TCH 52'. Rgt t/c.

RWY 35: PAPI(P4L)—GA 3.0° TCH 40'.

#### RUNWAY DECLARED DISTANCE INFORMATION

RWY 17: TORA-7000 TODA-7000 ASDA-7000 LDA-7000

RWY 35: TORA-7000 TODA-7000 ASDA-7000 LDA-7000

SERVICE: S6 FUEL 100LL, JET A QX 4 LGT MRL Rwy 17-35 preset low ints, to incr ints and ACTIVATE MALSR Rwy 17—CTAF. PAPI Rwy 17 and Rwy 35 opr continuously.

**AIRPORT REMARKS:** Attended Mon-Fri 1230-0030Z, Sat-Sun 1400-0030Z. 100LL fuel avbl 24 hrs self service. For Jet A fuel after hrs call 979-319-2740. Arpt located 4.6 NM NW of Lake Jackson. Air carrier ops involving acft with more than 30 passengers are not authorized in excess of 15 min before or after scheduled arrival or departure times without prior coordination with arpt manager and confirmation that ARFF svcs are avbl prior to ldg or txf.

**AIRPORT MANAGER:** 979-849-5755

**WEATHER DATA SOURCES:** ASOS 119.925 (979) 849-3319.

**COMMUNICATIONS:** CTAF/UNICOM 123.0

® HOUSTON APP/DEP CON 134.45

CLNC DEL 125.2

**RADIO AIDS TO NAVIGATION:** NOTAM FILE GLS.

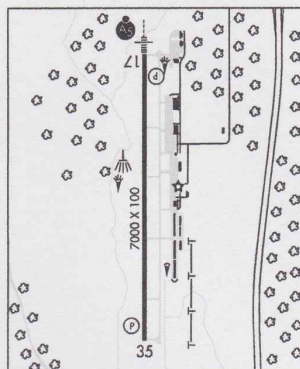
SCHOLLES (L) VOR/DME 113.0 VUH Chan 77 N29°16.16' W94°52.06' 247° 32.7 NM to fld. 4/6E.

VOR portion unusable:

285°-295° byd 35 NM blo 2,500'

FREEP NDB (LOM) 263 LB N29°11.66' W95°27.79' 174° 5.1 NM to fld. 35/5E. NOTAM FILE LBX.

ILS 109.1 I-LBX Rwy 17. Class IE. LOM FREEP NDB.



## CLASSIFIED ADS

Ads are free to any EAA member. They will run for 6 months, or until you pull them out of classified. Text or Email to [dirvine1945@gmail.com](mailto:dirvine1945@gmail.com)



**FOR SALE--LED Wig-Wag flasher.** Two circuit, optically isolated with selectable flash rate and pattern. Will accept LED and/or standard lights up to 15 amps. Flexible installation. \$45.00  
Dean Marcott Phone/text: 815-382-2220  
email: [deanmarcott@gmail.com](mailto:deanmarcott@gmail.com)

Signs:



Accessories:



**FOR SALE--**

Typical sign - \$10.00 each  
Tow bar mount - \$15.00 per set  
Rudder pedal extensions RV9/RV12 - 2 inch \$50.00 / 3 inch \$60.00 per pair  
RV14 Oxi bottle mount - \$60.00  
Custom applications available  
Custom panel bezels, headset hooks and many more  
Dean Marcott Phone/text: 815-382-2220  
email: [deanmarcott@gmail.com](mailto:deanmarcott@gmail.com)



**FOR SALE--Equity Partnership for Sale** at KDWH. 1/4 ownership share 1972 Piper Arrow PA28R-200. 3600TTAF 350 hrs on factory reman. engine and new scimitar prop. New complete leather interior! Garmin 430W, G5 PFD and HSI. King secondary, Stratus ADSB in/out. Century II AP. 25K buy-in, \$200.00 month fixed for insurance and hanger. \$115/hr on tach. Perks: Co-owners are CFII's and willing to instruct. Contact: [fivefiveplusaviation@gmail.com](mailto:fivefiveplusaviation@gmail.com)

**For Rent:** Shared hangar space in box hangar on Hill at KCXO. For more information contact Jeff Lehner 219-608-1463



**Contact Info—go to Home/contact us**

**EAA 302 Officers**

**President**

Joe Waltz

**VicePresident**

Miles Demster

**Secretary**

Jim Morrical

**Treasurer**

Bill Donahoe

**IMC/VMC Club**

Keith Pache

**Young Eagles/Eagles**

Dean Marcott

**Property**

Denny Irvine

**Website**

Darryl Foster

**Membership & Communications**

Rick Oliver

**Newsletter**

Denny Irvine

**Events**

Keith Pache

We now meet in Galaxy FBO's building on the South Side of the Conroe-North Houston Airport. Use the South Entrance, 1<sup>st</sup> floor. Meetings start at 10:00 AM.

You cannot access the FBO by the old Airport Parkway. You need to use Loop 336 and turn at Hawthorne Drive. This road has an Airport Entrance sign which mentions Galaxy FBO and the Black Walnut Restaurant. This is just southeast of the Roller Skating Rink.

See you there.

